



### Hamster for the Air Arms S400 Rifle.

Thank you for your purchase. Please read these fitting instructions before attempting to fit the hamster.

Your kit should contain -

- 1 off Hamster
- 2 off posts (31mm & 38mm long)
- 3 off countersunk machine screws
- 1 off 4mm allen key

#### Safety first.

Observe safe practices when handling your rifle and follow the manufacturers safety instructions when doing so.

It is advised that before carrying out any work on an air rifle that it is unloaded and the air receiver is empty.

If you are not sure that your skills are sufficient to fit the hamster seek professional advice.

Always follow the manufacturers instructions when operating power tools and ALWAYS wear safety glasses.

The hamster plate contains a strong magnet. Do not place it near magnetic media such as credit cards & floppy discs or any other magnetically sensitive devices. People with pacemakers should seek medical advice before using this product.

Installation.

1. Remove action from stock by unscrewing M6 stock retaining bolt from the underside of the rifle. Photo 1

2. Check parts. The long support post is positioned foremost and short post is positioned at the original stock retaining screw position. Photo 2

3. Temporarily assemble the hamster and fit to the stock and action using the long M6x95 csk socket head screw and the short post. Photo 3

[www.rowanengineering.com](http://www.rowanengineering.com)

4. Mark out the position of the front retaining post hole, with a soft pencil.

Drill a small pilot hole (2.5 to 3mm) ensuring drill is square to top face of stock.

Drill out to 6.3 to 6.5mm. (step 4b). It is useful to have a helper hold the stock and check the squariness during drilling.

A drill press is recommended but can be drilled with care using a pistol drill. Photo 4

5a and 5b

Countersink to inside of the stock to ensure the M6 x 40mm CSK screw will not touch the air receiver tube when the action is replaced into the stock.

Photo 5° & 5b

6. Fix the front post to the stock using the M6x40 screw. note the angle on the end of the post must align to the underside stock angle. Photo 6

7 Fix the hamster to the stock and action using the M6x100 screw into the action, (leave loose for now) Photo 7

8. Fix the hamster to the front post using the M6x25mm screw. Photo 9

9. GENTLY tighten front and rear screws. Do not overtighten as this will crush the stock.

[www.rowanengineering.com](http://www.rowanengineering.com)

Photo 1



Photo 2



Photo 3



[www.rowanengineering.com](http://www.rowanengineering.com)

Photo 4a

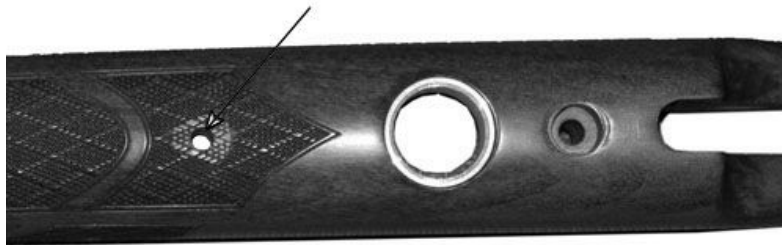
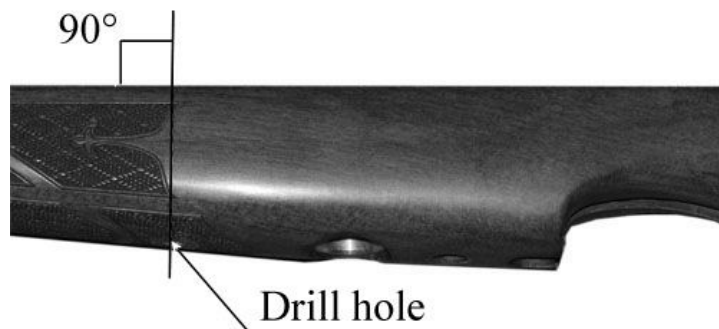
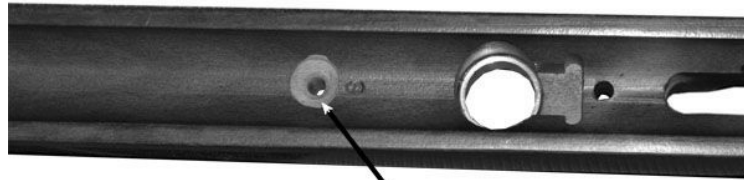


Photo 4b



[www.rowanengineering.com](http://www.rowanengineering.com)

Photo 5a



Countersink flush



Photo 5b

[www.rowanengineering.com](http://www.rowanengineering.com)

Photo 6



Photo 7



Photo 8



Photo 9



[www.rowanengineering.com](http://www.rowanengineering.com)